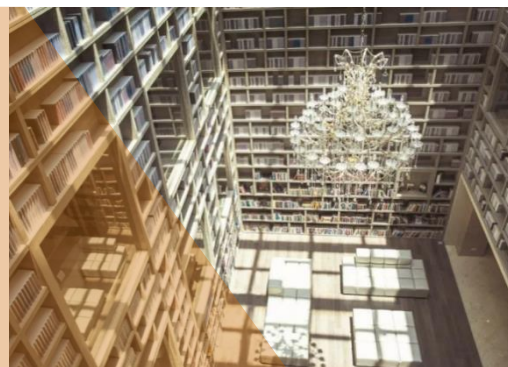


# 台灣北投溫泉

## The Gaia Hotel 大地酒店

### 限定美食住宿專案 3 天



出發及入住日期 Travel & Stay Period: 03/07/2023-30/09/2023

❗ 出票日期,旺季,轉乘其他 Booking class 附加費等請向本公司職員查詢

CATHAY PACIFIC

"Q" Class 2-7N  
Light

Product code:  
JH-TPE03CX-09

#### 套票包括 Package Details

- ◊ 來回香港至台北國泰航空經濟客位機票乙張  
Round trip tickets between Hong Kong and Taipei by Cathay Pacific
- ◊ 2 晚溫泉酒店住宿包早餐  
2nights Onsen hotel accommodation with breakfast
- ◊ 旅監局 0.15%印花費 0.15% TIA Levy



## 北投精品溫泉之選.享限定住宿方案

### The Gaia Hotel 大地酒店

<https://www.thegaiahotel.com/>

捷運北投站乘酒店接駁車前往

北投大地酒店位於大自然中, 四處被綠色植物包圍。走進酒店內立刻被

4 層樓高的藏書閣吸引眼球, 充滿文青氣息是打卡的絕佳位置。

酒店共有 48 間房, 是北投溫泉區中的人氣之選。

#### 限定住宿方案



包含以下內容

- 2 晚大地酒店住宿
- 2 天酒店早餐
- 1 次酒店 Shabu Shabu 涮涮鍋晚餐\*
- 奇岩一號紅袍藤椒乾拌麵伴手禮 (一包為 4 人份)



\*圖片只供參考

2 人 1 房晚餐將安排雙人套餐, 伴手禮數量 1 包, 入住時領取  
3 人 1 房晚餐將安排 3 人套餐, 伴手禮數量 2 包, 入住時領取  
\*預約時請提供晚餐用餐日期



房間升級優惠



入住奇岩客房客人可享免費升級至楓林客房

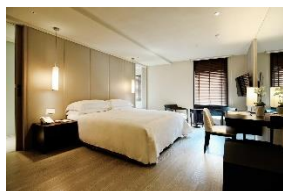
\*先到先得, 視供應情況而定

晚數	房間種類	Sharing Twin (每位 Person)
2 晚	奇岩客房 Qiyán Room (Double/Twin)	\$3,999 起

晚數	房間種類	Triple (每位 Person)
2 晚	楓林客房 Fenglin Room (Double/Twin+extra bed)	\$4,199 起

酒店入住附加費(每晚每房):

- 29-30/9, 星期六: \$410



奇岩客房 Qiyán Room



楓林客房 Fenglin Room



#### 細則及條款 Terms & Conditions:

1. 套票價錢以每位計算，如有更改，恕不另行通知。Prices quoted are on per adult basis and subject to change without prior notice.
2. 只適用於新預訂之客人 Valid for new bookings only, subject to availability.
3. 以上酒店房種資料及圖片只供參考。The above hotel room types and photos are for reference only.
4. 可根據要求提供單人房、三人房或小童價錢，請聯繫我們查詢。Single, Triple or Child prices are available on request basis. Please contact us for details.
5. SHARE TWIN: 2 張床房/SINGLE ROOM: 單人房/SEMI DOUBLE: 房間面積較 TWIN/DOUBLE 細小或相等於 SINGLE/TWIN+EXTRA BED: 2 張床房加床。而加床並非正式固定床，尺寸會較小及有機會是梳化床/拉床/摺床。SHARE TWIN: 2 single bed/SINGLE ROOM: one single bed /SEMI DOUBLE: Room size is smaller than TWIN/DOUBLE ROOM or same as SINGLE ROOM/TWIN+EXTRA BED: 2 Single Bed with Extra bed. Extra bed is not a formal fixed bed, the size will be smaller and it will be sofa bed/broach bed/folding bed.
6. 如果您希望在同一家酒店逗留更長時間，我們可以安排住宿延期請聯繫我們查詢。We can arrange to accommodation extension if you wish to stay longer in the same hotels. Please contact us for prices and details.
7. 需另加收旺季附加費。Subject to high peak season surcharge.
8. 必須在出發前至少 7 個工作日進行預訂。Reservations must be made at least 7 working days prior to departure.
9. 有關預訂條款和條件，請瀏覽 <https://www.jebsenholidays.com/terms-and-conditions/>  
For booking terms & conditions, please visit <https://www.jebsenholidays.com/terms-and-conditions/>
10. 以上價錢不包括離境稅、香港機場保安費、航空保險附加費、航空燃油附加費、季節性附加費和旅行社服務費。這些金額將在確認訂單後確定，並將添加到最終票價中。Departure taxes, Hong Kong Airport Security Charge, airlines insurance surcharge, airlines fuel surcharge, seasonal surcharge and travel agency service fee are not included in the above fares. These amounts will be determined upon your booking confirmation and added to the final fare.
11. 此優惠不能與其他任何促銷、優惠券或折扣一起使用。The offer cannot be used in conjunction with any other promotions, offers, vouchers or discounts.
12. 酒店之自選項目(包括早餐、晚餐等)必須於訂購套票時一併預訂。Hotel's optional items (including breakfast, dinner etc.) must be booked together.
13. 所有旅遊保險之涵括內容及細則一切以該保險公司最新細則為準。All travel insurance coverage and rules are subject to the latest rules and regulations of the insurance company.
14. 如有任何爭議，本公司保留最終決定權。The Travel Agency reserves final decision in case of any disputes.

#### 溫泉酒店注意事項:

- 早餐及晚餐內容因應季節及當天食材而有可能作出變動，恕不另行通知。  
Breakfast and dinner are subject to change without notice depending on the season and the ingredients of the day.
- 晚餐時間大多設定為晚上 6 時至 8 時。逾時不候，亦不設退款。請小心計劃行程及時間。  
Dinner time is mostly set at 6:00 pm to 8:00 pm. No refunds will be provided for overtime. Please plan your itinerary and time carefully.
- 每間酒店內的溫泉設施包括房間內的風呂，公共大浴場，露天風呂及賞切風呂所使用的水不一定含有溫泉水成份，敬請留意。  
Please note that the hot spring facilities in each hotel include in-room baths, large public baths, open-air baths and private bath. The water used does not necessarily contain hot spring water.